



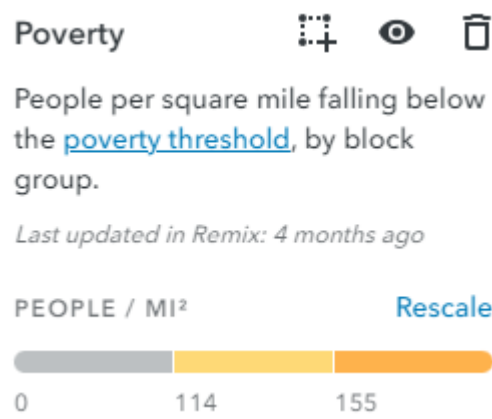
FY2023-2025 Definition of “high percentage of Low-Income Households”

For the 2023-2025 Biennium STIF Plan the Hood River County Transportation District STIF Advisory Committee chose to define the poverty threshold for Hood River County as Census block groups within the County that have 15% or more of households with an income level that is 200% or less of the federal poverty level (FPL).

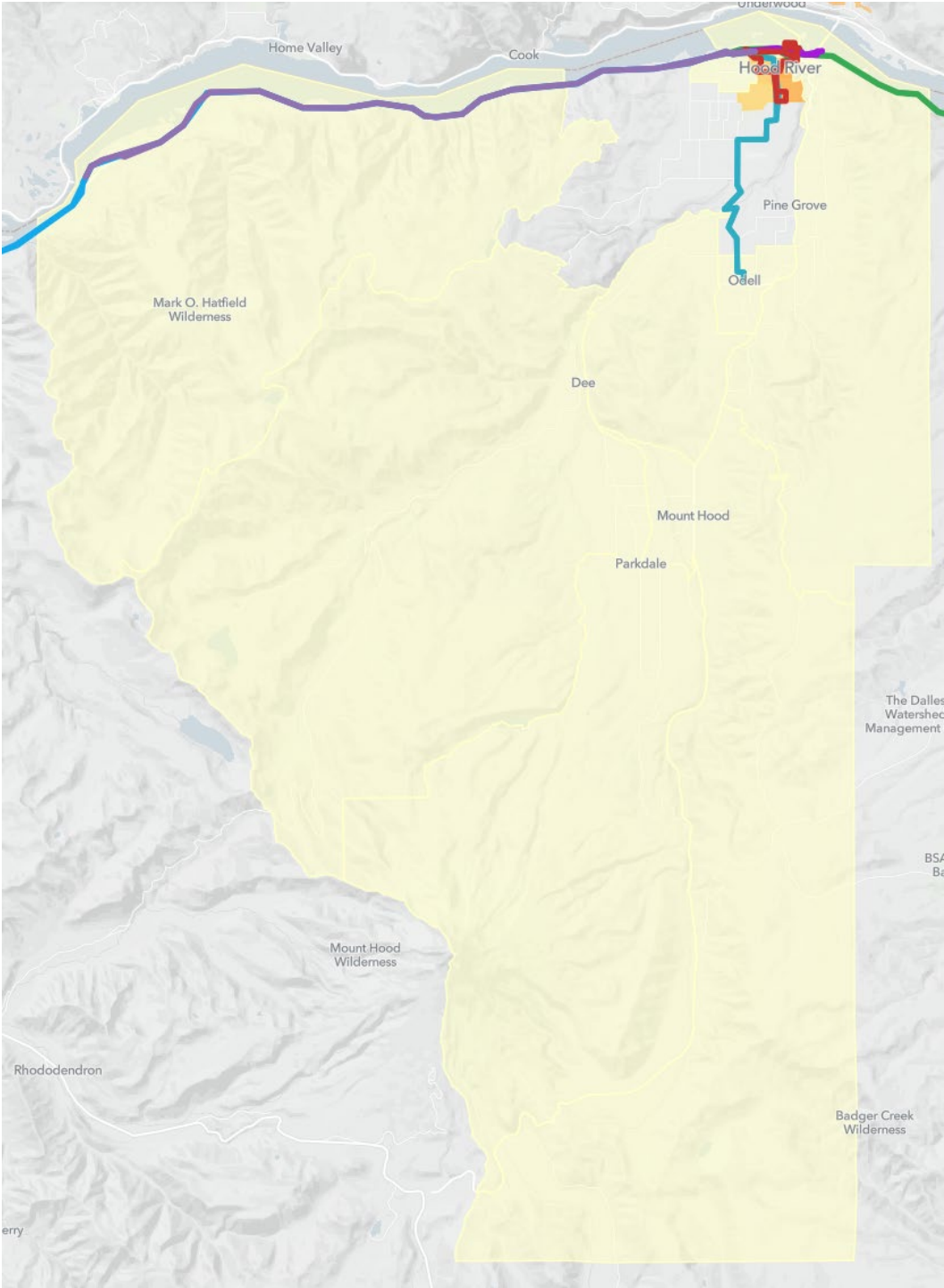
In previous biennium’s the 2017 American Community Survey data set was used to determine the poverty threshold which was defined as census block groups within the county with 30% or more of the population within 200% of FPL. For the 2023 – 2025 Biennium staff used Remix, an ODOT recommended tool, to map the poverty rate threshold. Remix looks at the poverty threshold of each census block group instead of only the percentage of individuals who reside in the block group that earn a household income of 200% of the Federal Poverty Level (FPL) or less. Per the U.S. Census Bureau the poverty threshold is defined by: “Following the Office of Management and Budget's (OMB) Statistical Policy Directive 14, the Census Bureau uses a set of money income thresholds that vary by family size and composition to determine who is in poverty. If a family's total income is less than the family's threshold, then that family and every individual in it is considered in poverty. The official poverty thresholds do not vary geographically, but they are updated for inflation using the Consumer Price Index (CPI-U). The official poverty definition uses money income before taxes and does not include capital gains or noncash benefits (such as public housing, Medicaid, and food stamps). “

The attached maps show census block groups within the county that have 15% or more of the population within 200% of FPL and considered a “high percentage of Low-Income households. The dark orange color depicts a higher number of individuals who are below the poverty threshold by block group. The below graph shows the block groups with the percentage of individuals who earn a household income of 200% of the FPL or less and people per square mile falling below the poverty threshold. The dark orange color depicts a higher number of individuals who are below the poverty threshold by block group.

Tract	Block Group	% of people within the 200% of the poverty threshold
9501	4	52
9501	3	48.7
9503	3	45.3
9503	2	44.8
9501	1	36.6
9504	3	32.9
9501	2	32.6
9504	1	30.8
9503	1	27.9
9502	1	21.7
9503	3	19
9504	2	18.3
9503	2	16.2
9503	1	15.5
9502	1	12.5
9504	4	11.6
9502	3	9.5
9502	2	8.8
9502	2	1.8



Map 1: Hood River County



Map 2: City of Hood River Focused

